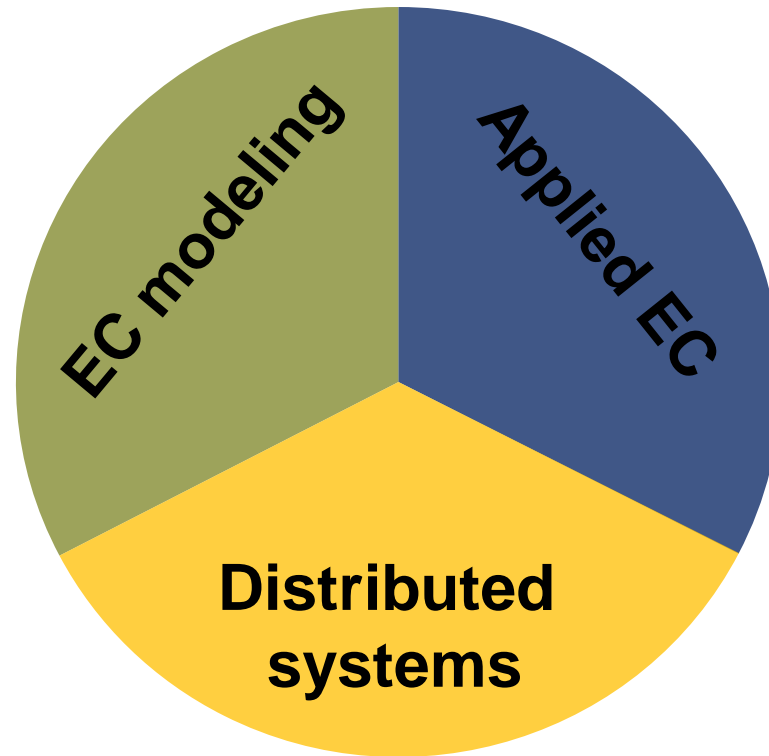


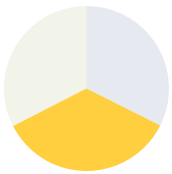


Team meeting 2013

Juanlu J. Laredo

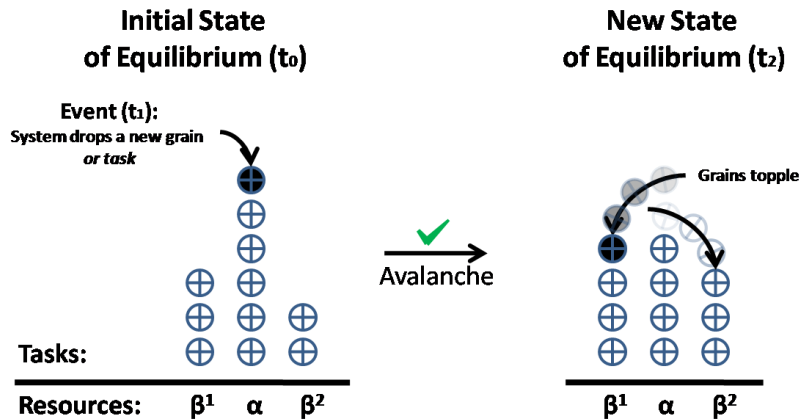
Research lines





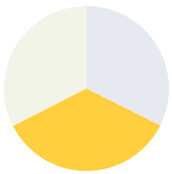
Distributed systems

Sandpile Scheduler



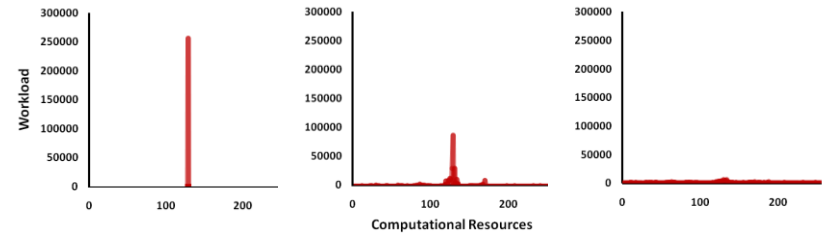
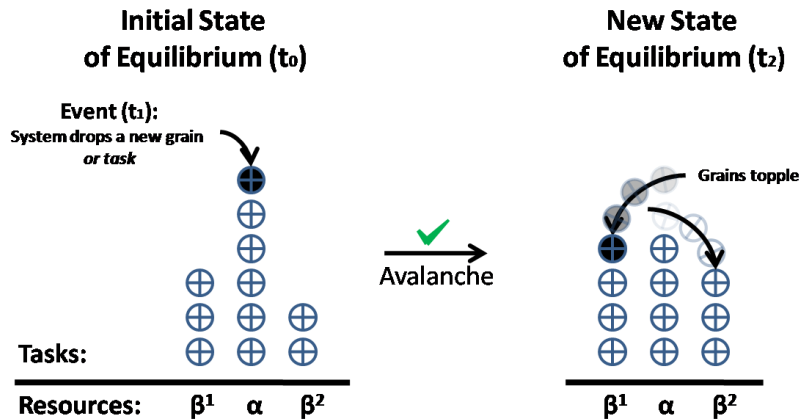
Designing a Self-organized Approach for Scheduling Bag-of-Tasks (2012)

JLJ Laredo, B Dorronsoro, J Pecero, P Bouvry, JJ Durillo, C Fernandes
P2P, Parallel, Grid, Cloud and Internet Computing (3PGCIC)



Distributed systems

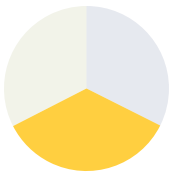
Sandpile Scheduler



Designing a Self-organized Approach for Scheduling Bag-of-Tasks (2012)

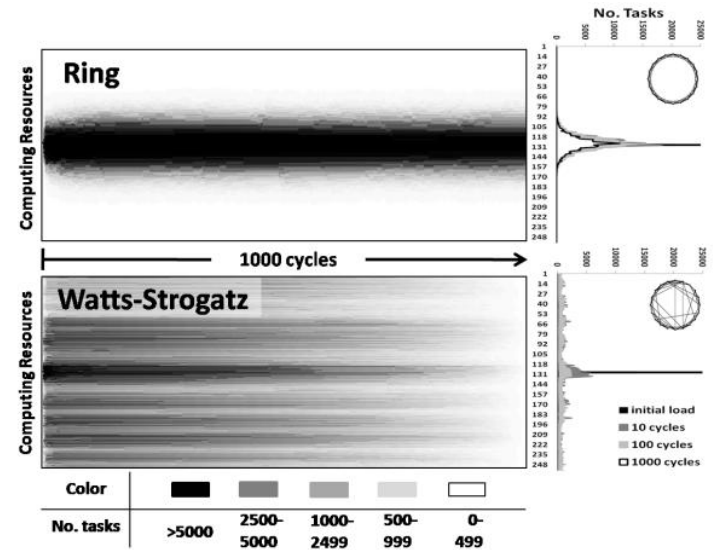
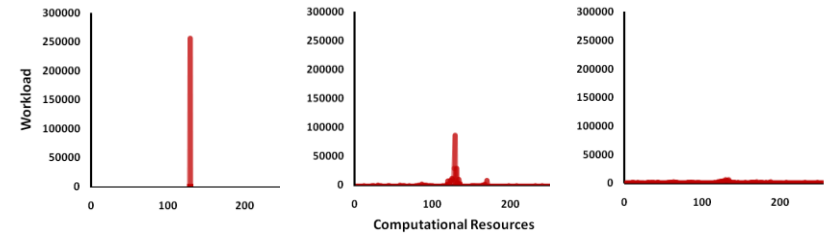
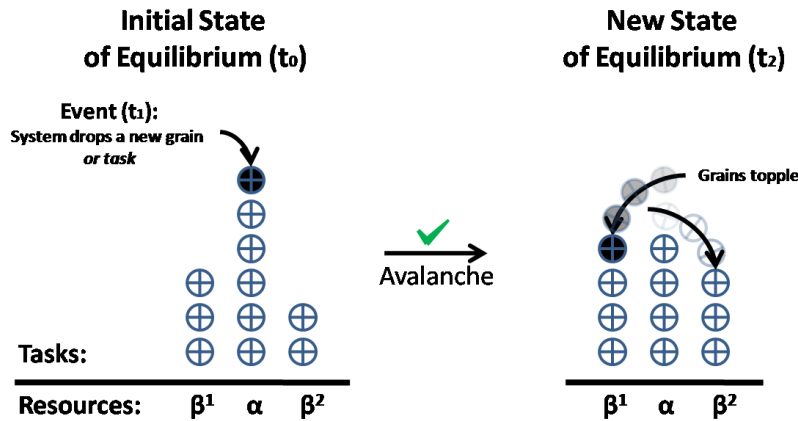
JLJ Laredo, B Dorransoro, J Pecero, P Bouvry, JJ Durillo, C Fernandes

P2P, Parallel, Grid, Cloud and Internet Computing (3PGCIC)



Distributed systems

Sandpile Scheduler



Designing a Self-organized Approach for Scheduling Bag-of-Tasks (2012)

JLJ Laredo, B Dorransoro, J Pecero, P Bouvry, JJ Durillo, C Fernandes
P2P, Parallel, Grid, Cloud and Internet Computing (3PGCIC)

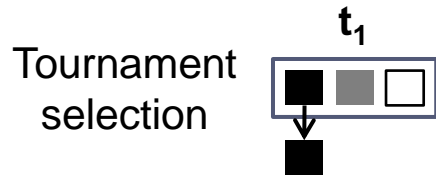
The Sandpile Scheduler: How self-organized criticality may lead to dynamic load-balancing (2013)

J.L.J Laredo, P. Bouvry, F. Guinand, B. Dorransoro, C. Fernandes
Cluster Computing DOI: 10.1007/s10586-013-0328-x



EC modeling

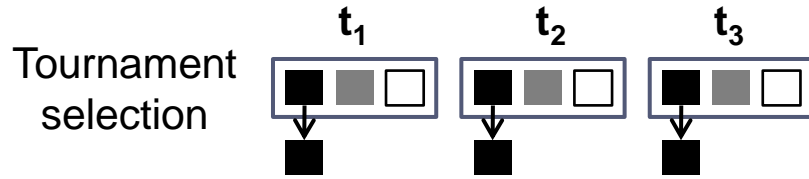
Cooperative selection





EC modeling

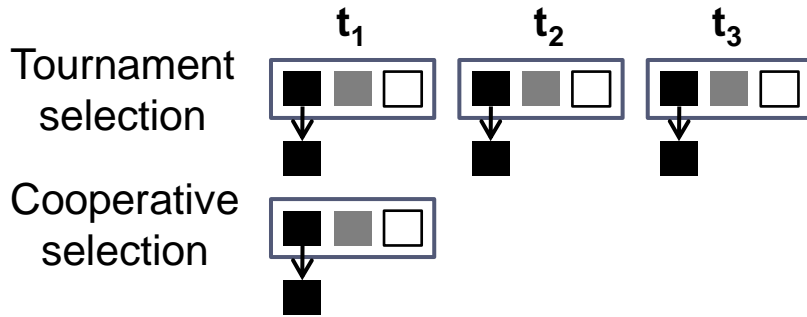
Cooperative selection





EC modeling

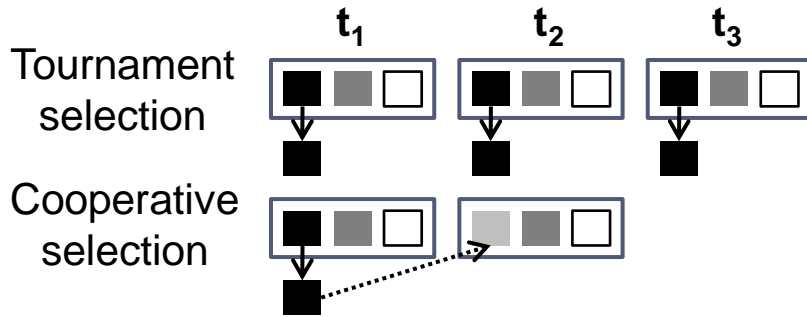
Cooperative selection





EC modeling

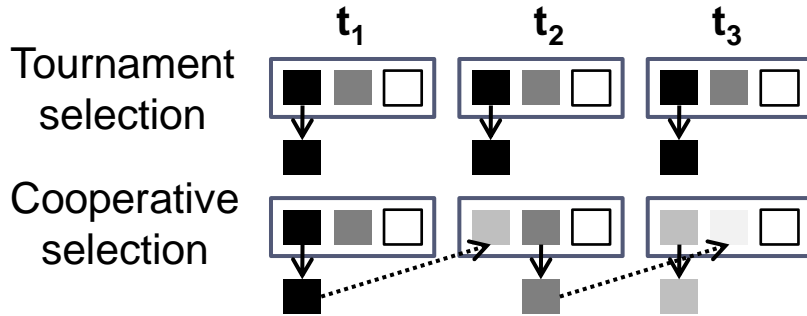
Cooperative selection





EC modeling

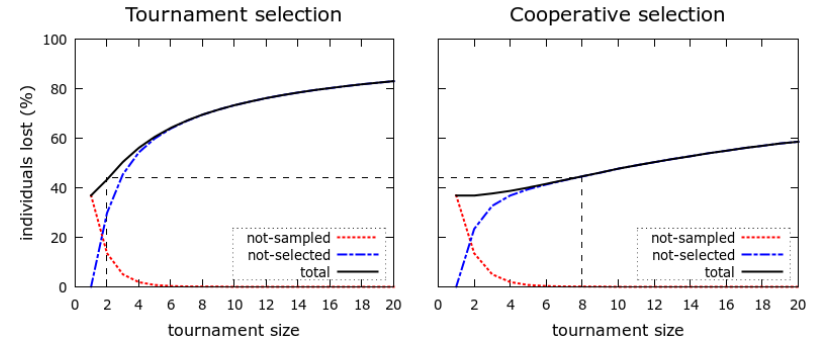
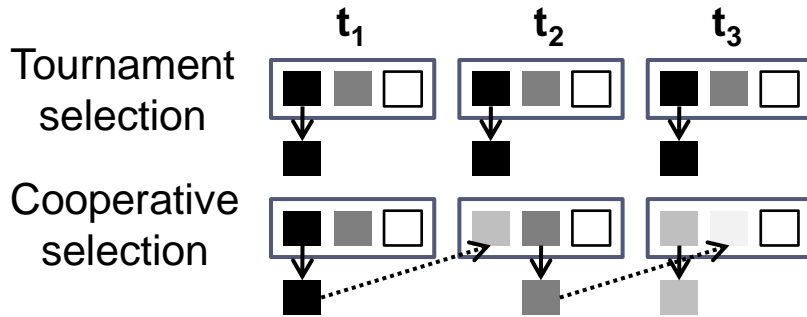
Cooperative selection





EC modeling

Cooperative selection



***Oversized Populations and Cooperative Selection:
Dealing with Massive Resources in Parallel Infrastructures*** (2013)
J.L.J. Laredo, B. Dorronsoro, C. Fernandes, J.J. Merelo, P. Bouvry. LION 7

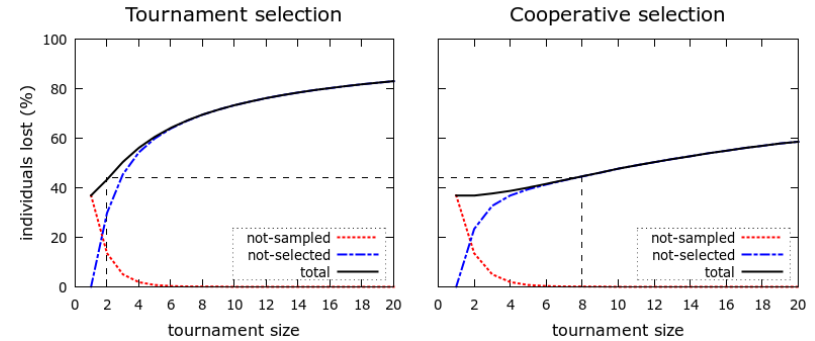
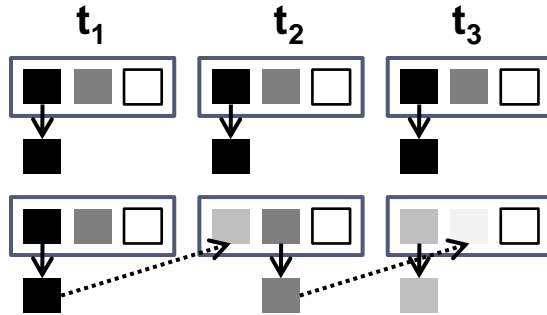


EC modeling

Cooperative selection

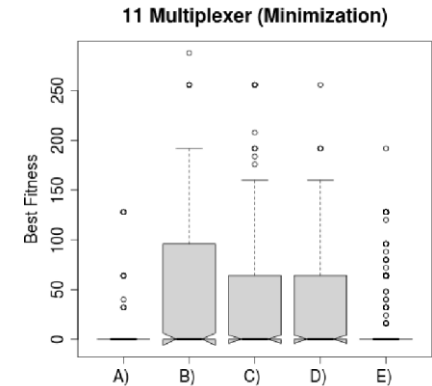
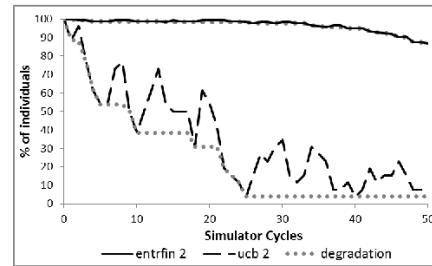
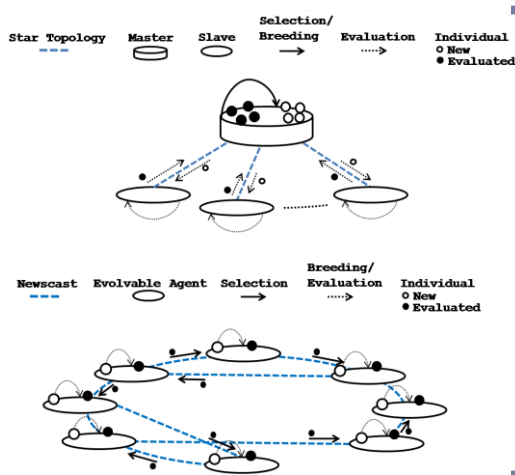
Tournament selection

Cooperative selection



Oversized Populations and Cooperative Selection:
Dealing with Massive Resources in Parallel Infrastructures (2013)
 J.L.J. Laredo, B. Dorronsoro, C. Fernandes, J.J. Merelo, P. Bouvry. LION 7

Robust parallel EAs



Designing Robust Volunteer-based Evolutionary Algorithms (2013)
 GPem. Pending of minor revisions

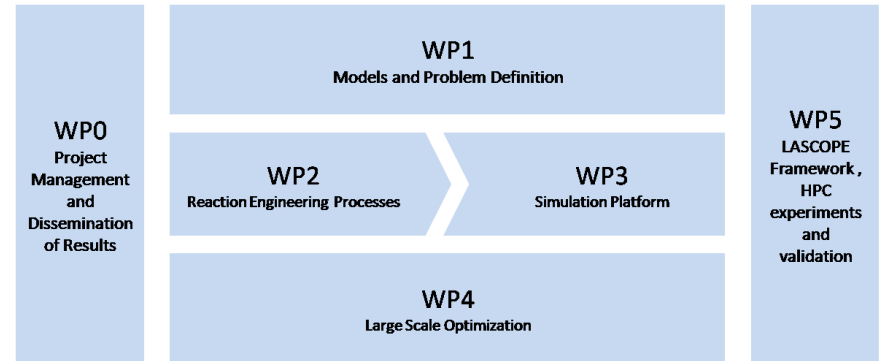


Applied EC

Engineering (RUES)

FNR CORE LASCOPE project

Decision... next week!!



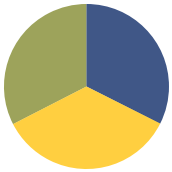
Biology (LCSB)

Contributing with Sune's framework

- Cooperative selection
 - Decentralized MOEA
 - Parallelization
- Target:

2014 evo*
Granada, Spain
23-25 April 2014
www.evostar.org





Thanks for your attention!
