

# PCOG Yearly Team Meeting

Loizos Koutsantonis  
University of Luxembourg

December 14, 2020

# EuroCC National Competence Centre



## National Competence Centre (NCC) in HPC and related disciplines (HPDA/AI)

- Provide High Performance Computing (HPC) services to industry (including SMEs), academia, and the public
- Provide training and skills development

## Competence Mapping

- Identify current HPC related competencies
- Current status of HPC in the country and needs (applications in both industry and academia)

## Training and Skills Development:

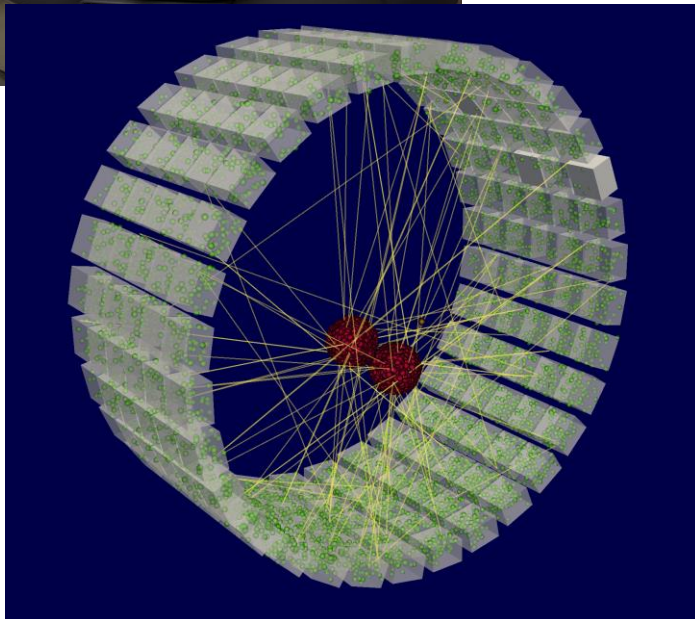
- Mapping of HPC related training activities in Luxembourg (Surveys/Mapping/Interviews)

## Facilitation of Access to Scientific and Technical Expertise of Knowledge

- HPC demonstrators of applications of HPC in industry and research

# HPC for Medical Imaging

## Data Simulation (Forward Problem)



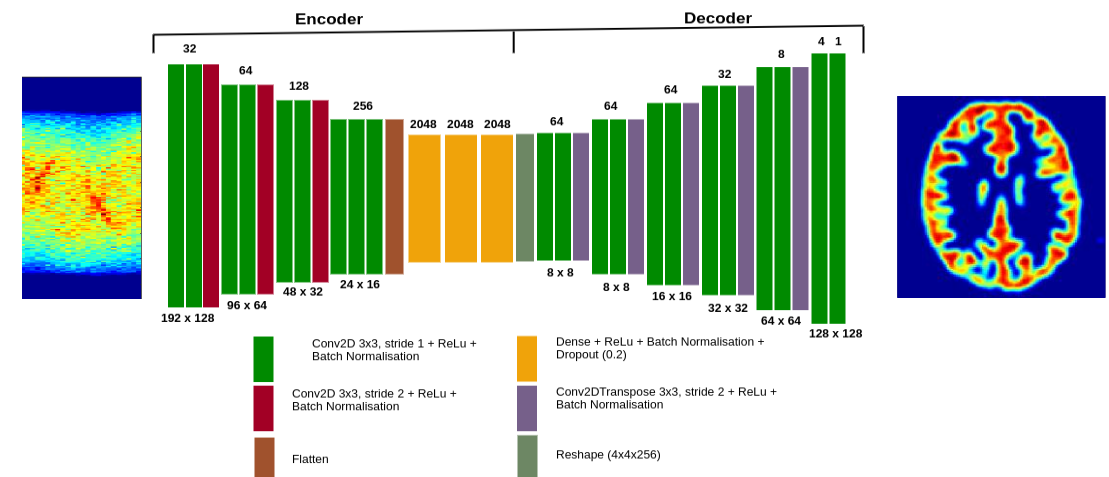
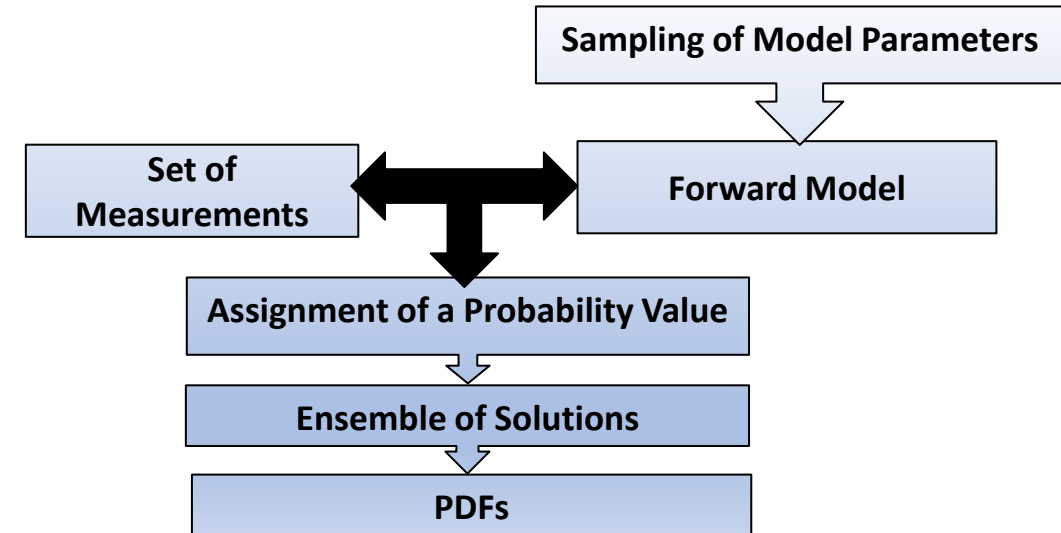
Monte Carlo  
Parallel Tempering

*MPI-CUDA Multi nodes  
GPU Implementation*

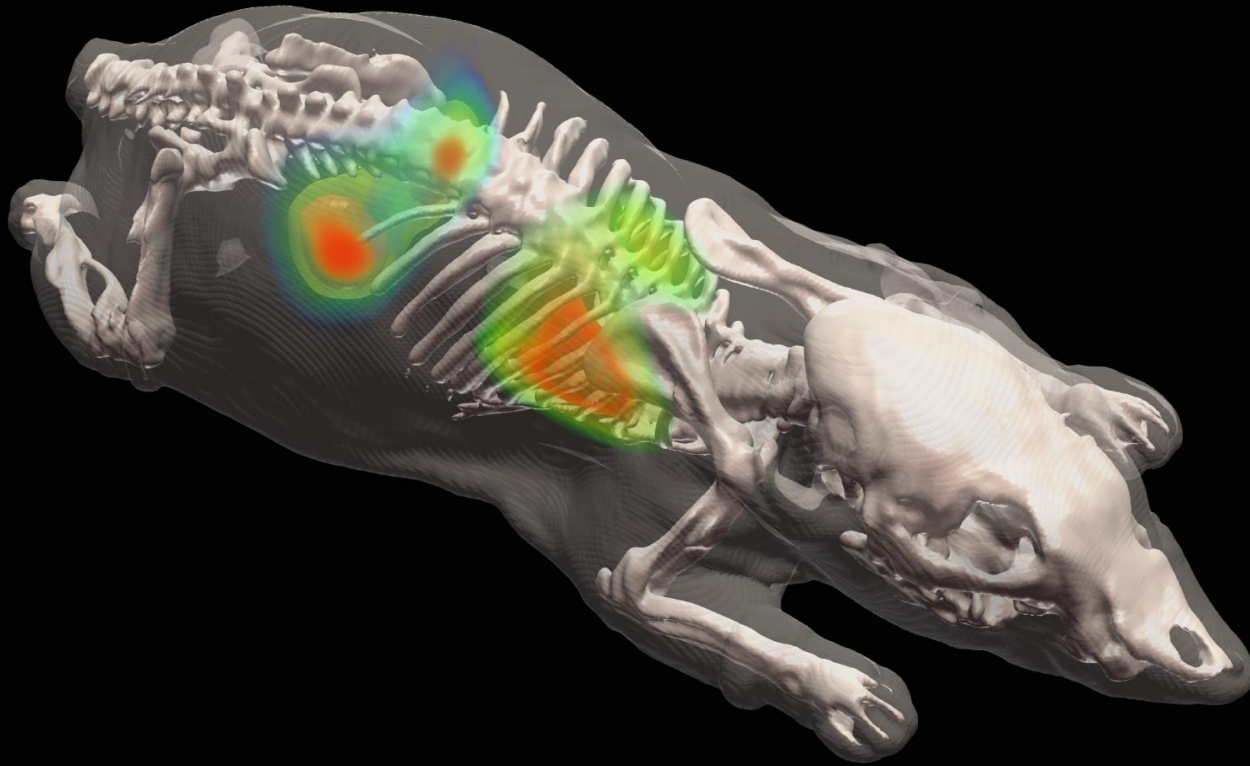
## CNN Reconstruction

*Tensorflow  
Training on single node*

## Image Reconstruction (Inverse Problem)



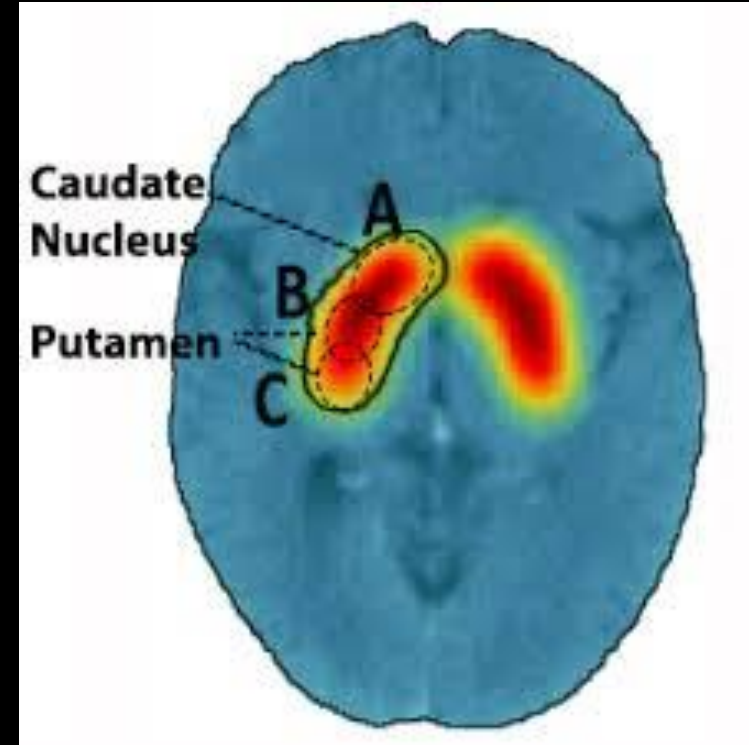
# Applications



## Small Animal Imaging

Kidneys (DTPA- Tc99m)

Lungs (MAA-Tc99m)

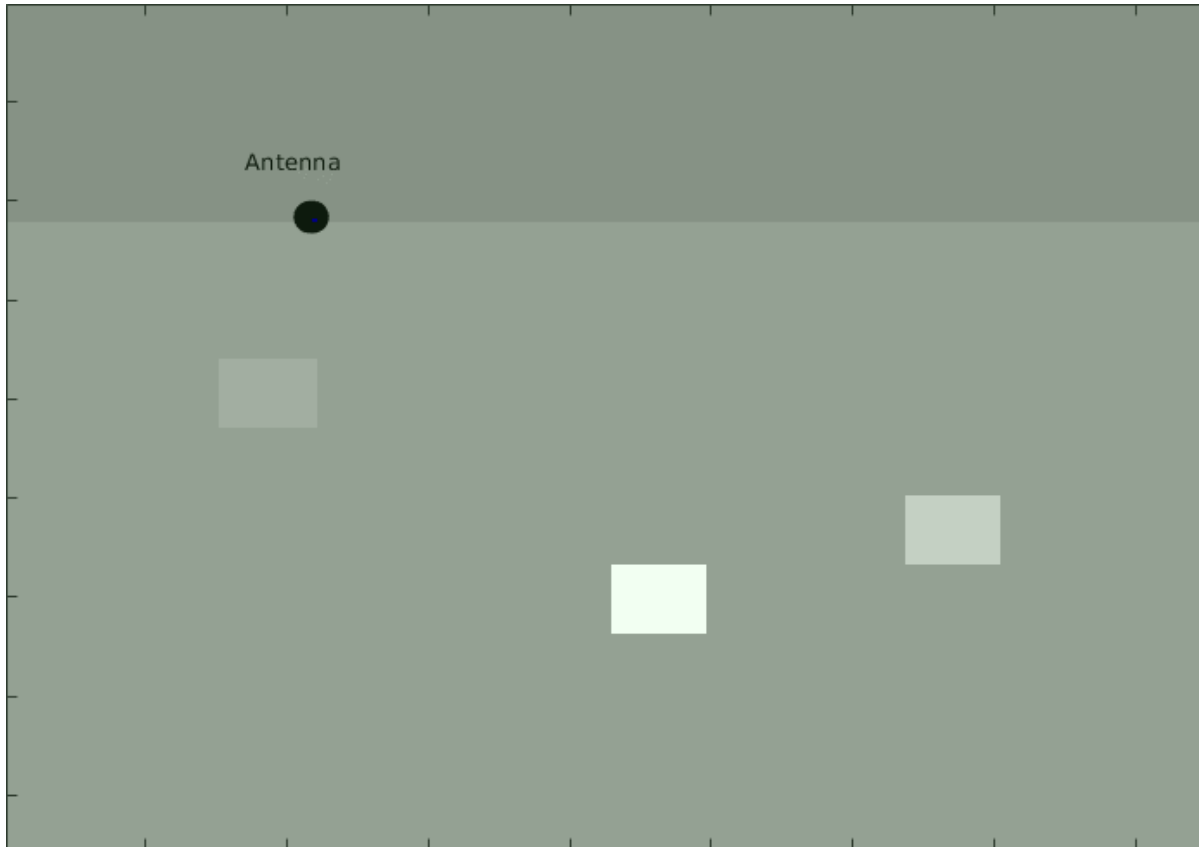


## SPECT for Parkinson' Disease

Brain Imaging (Ioflupane I123)

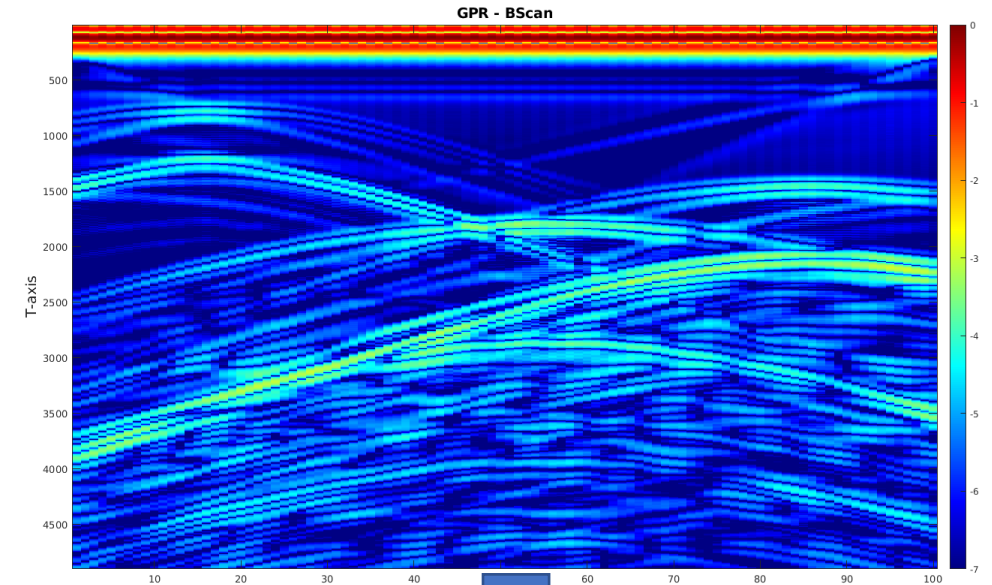
# Ground Penetrating Radars

*A non-linear inverse problem with applications in geoscience*



*2D simulation of wave propagation in soil  
Performed on the iris-cluster (single GPU)*

DATA



1. AI/CNNs
2. Analytic Inversion
3. Iterative Reconstruction
4. Optimization



**Objects**

?

Multi GPU  
programming for

1. Simulation
2. Training
3. Iterative reconstruction





*Thank you!!!*